

# P6 Home Learning

Monday 22<sup>nd</sup> February

Morning Starter Activity Grid (20-30 mins)

Choose a different activity each day.

**CREATE Glasgow** – Choose an activity that interests you.

<https://www.youtube.com/watch?v=Ja5sH75jIwM>

**Scratch** – Coding. <https://scratch.mit.edu/>

**Pobble 365** – Create your own story or complete the tasks connected. <https://www.pobble365.com/>

**Animal Cam** – Choose an animal, watch the webcam for 20 minutes each morning and write a diary entry to describe what the animal is doing at that time.

<https://www.edinburghzoo.org.uk/webcams/panda-cam/>

**National Geographic Kids** – Explore this website, find something that interests you and read the information for 20 minutes. <https://www.natgeokids.com/uk/>

**Nasa Kids** – Explore this website and find something that interests you. <https://www.nasa.gov/kidsclub/index.html> or <https://www.nasa.gov/>

**Hit the Button** – Multiplication and division game.

<https://www.topmarks.co.uk/maths-games/hit-the-button>

**HWB – Jo Wicks**



<https://www.youtube.com/channel/UCAxWIXTOiEJoOTYIRfn6rYQ>

# Newsround

<https://www.bbc.co.uk/newsround>



Complete the template with today's news highlights.

---

---

---

---

---

---

---

---

---

---

---

---

---

---

---

---

---

---

---

---

---

---

---

---

---

---

---

---

---

---

---

---

## Literacy – Common Words

### COMMON WORDS

LI – I can use however, although, until and unless in a sentence with my common word.

<u>Nevis</u>	<u>Lomond</u>	<u>Macdui</u>	<u>Cairngorm</u>
different	company	supply	row
experience	radio	corner	least
excellent	we'll	electric	catch
excited	action	insects	climbed
receive	capital	crops	wrote
grew	factories	tone	shouted
drove	settled	hit	continued
blew	yellow	sand	itself
off	isn't	doctor	else
too	southern	provide	plains

- 5 fantastic sentences using one of the connectives listed and a common word.
- Remember to use different sentence openers, adjectives, adverbs, connectives, and accurate punctuation.

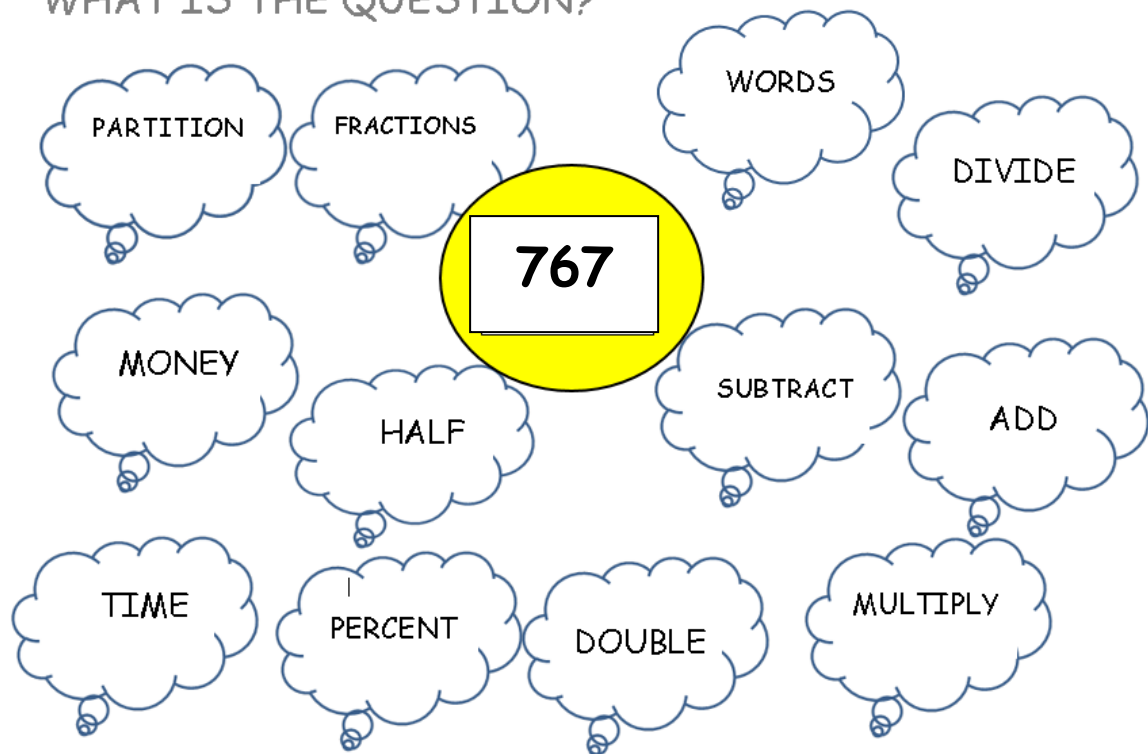
## Literacy – Spelling and Grammar Games

<https://www.topmarks.co.uk/english-games/7-11-years/spelling-and-grammar>

Pick a challenge of your choice. Explore this website for other games you might enjoy.

# Numeracy – What is the Question?

WHAT IS THE QUESTION?



Create your own amazing sums or questions!

## Example

$$50\% \text{ of } 767 = 383.5$$

$$50\% \text{ of } 700 = 350$$

$$50\% \text{ of } 60 = 30$$

$$50\% \text{ of } 7 = 3.5$$

## Sumdog

Complete the challenges I have set.



# HWB – PE



## Physical Education Bingo



Be active for at least 60mins every day!

### B I N G O

<p>40 Jumping Jacks</p>	<p>40 High Knees</p>	<p>40 Toe Touches</p>	<p>40 Butt Kicks</p>	<p>20 Squats</p>
<p>40seconds Plank</p>	<p>20 Mountain Climbers</p>	<p>20 High Jumps</p>	<p>2 minute Dancing</p>	<p>20 Shoulder taps</p>
<p>10 Burpees</p>	<p>10 Knee Push ups</p>	<p>1 Good Deed</p>	<p>15 Sit ups</p>	<p>2 minute Meditation</p>
<p>2 minute Jump rope</p>	<p>20 seconds Crab Walk</p>	<p>20 Star Jumps</p>	<p>20 Lunges</p>	<p>20 seconds Bear Walk</p>
<p>20 High Kicks</p>	<p>30s each side Tree pose</p>	<p>30 seconds V-sit Hold</p>	<p>1 minute Wall Sit</p>	<p>1 minute Running on spot</p>

# RME with Mrs Wallis

P6 Week of 22.02.21

*Every year 22<sup>nd</sup> February is World Thinking Day.*

Read the slides.



## What Is World Thinking Day?

World Thinking Day is celebrated on 22nd February each year. It is celebrated around the world by 10 million Girl Guides and Girl Scouts in 150 countries.



The first World Thinking Day was celebrated in the USA in 1926.

Girl Guides and Girl Scouts think of each other on this day.

They celebrate and give thanks for being part of this global movement.

They raise money to support the movement and allow members to participate around the world.

## When Did It Begin

In the USA, at the fourth world conference in 1926, it was decided that there should be a special day each year for members of the organisations to think about what it means to be part of their organisation, to learn more about Girl Scouts and Guides in different parts of the world and the impact that being a member can have on people's lives.

The date was chosen as it was the joint birthdays of the founders of the scouting movements for boys and girls:

Lord and Lady Baden Powell.



## The Impact of World Thinking Day

Traditionally, members of the Girl Guides and Girl Scouts donate one penny to the World Thinking Day Fund.

This started in 1932 when Lady Baden Powell wrote to all members asking them to donate one penny. At that time, this would have bought a loaf of bread.



# The Impact of World Thinking Day

These days, with 10 million members worldwide, even a penny can have a big impact.

The funds raised can help Girl Guides and Girl Scouts around the world be part of the movement.



Positive Thinking

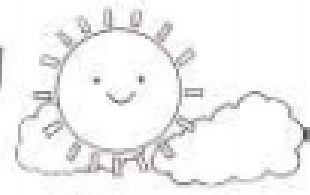




P6 Week of 22.02.21

# Positive Thinking

A Positive Thoughts Diary



For one week, record a positive thought at the end of each day. Think back and reflect on the day. There may have been things that weren't so great about the day, but try to always find something that went well. Only positive thoughts are allowed in this diary!

Monday

Tuesday

Wednesday

Thursday

Friday

Saturday

Sunday